

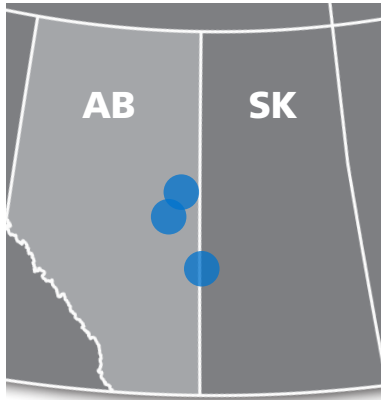
# Heavy Oil operations

## At a Glance



Bonnyville, Cold Lake, Lloydminster

February 2022



### INVESTING LOCALLY

## Significant local economic contributions

Supporting jobs, companies and public services (health, safety and education)

- Supporting local direct and indirect (suppliers) jobs
- Revenues to governments in royalties and taxes
- Property taxes to municipal governments
- Surface land rentals to landowners



### LOCAL EMPLOYMENT

## 470+ full-time staff

including contractors

## 20 students

in cooperative work terms in 2021



### 2020 LOCAL COMMUNITY HIGHLIGHTS

## 5,800+ students

supported through online learning and nutrition programs during the pandemic, including the Northern Lights School Division and the Lloydminster Public Schools Division

## 110+ community organizations

supported, including STARS and HALO medical rescue helicopters, Ronald McDonald House Charities, St. Paul & District Hospital Foundation, Lloydminster Health Foundation, local fire departments and senior homes

## Employees volunteer

and fundraise for many local charities, including the Bonnyville Health Foundation and Lakeland Humane Society

## Working together

through community-based stakeholder groups, such as the Lakeland Industry and Community Association (LICA), to address community issues, including social and economic development, and environment stewardship

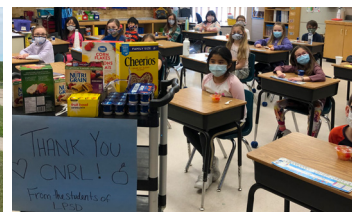
## Investing in local communities



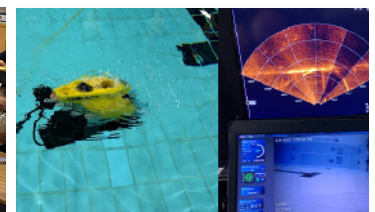
Canadian Natural participates in the Bonnyville & District Chamber of Commerce Annual Chili Cook-off in support of the Society for the Prevention of Cruelty to Animals. Our team was hands-on when involved, raising funds for a good cause while having some fun doing it. They even took home the 2021 Team Spirit award!



New laptops were donated to Elizabeth School, located in the Elizabeth Metis Settlement in the Bonnyville and Cold Lake region. These laptops are used for virtual learning, which has been a particularly large need during the COVID-19 pandemic. Many students require laptops to be able to safely do their schooling from home.



Throughout our long-standing partnership with the Lloydminster Public Schools Division, supported the school breakfast program, as well as the Lloydminster Region Health Foundation's mental health initiative, Project Sunrise, to help to develop better services that support youth wellness within the community.



As a long-term supporter of the Lloydminster Rescue Squad, we donated towards a remote operating vehicle (ROV) with sonar that allows for safer water searches during the night. Prior to this, we helped with the purchase of an air boat that is used for emergency medical services and technical rescue.

# 2020 CORPORATE FACTS



## EMPLOYMENT CREATION

**82,000+**

**full-time  
equivalent jobs**

including direct, indirect (suppliers)  
and induced (economy at large)  
supported by operational and  
capital spending in Canada

**329**

**students**

in cooperative work terms  
across all operations

**~10,000**

**employees**

across our operations

**Indigenous  
business  
development**

we work with  
Indigenous companies  
and contractors, and  
support local training and  
capacity building



## COMMUNITY FACTS

**158**

**organizations**

supported through COVID-19  
relief, including Elk Point and Area  
Victim Services, Bonnyville Victim  
Services, Cold Lake Victim Services,  
and local food banks

**159**

**contracts**

awarded to  
Indigenous businesses

**8,300+**

**hours**

of employee  
volunteering across  
our operations

**129**

**scholarships**

awarded across  
operations, including  
post-secondary and  
undergraduate students  
from Lakeland College



## LOCAL SAFETY INITIATIVES

### Improving safety

Our local teams follow active safety  
improvement plans focused on meeting  
our ultimate goal of *"No harm to people;  
No safety incidents"*

### COVID-19 health protocols



We implemented health protocols  
and enhanced work procedures,  
including a company-specific health  
screening app for our staff



## ENVIRONMENT HIGHLIGHTS

**32%**

**reduction in greenhouse gas  
(GHG) emissions intensity**

since 2012 across all operations – same as  
removing approximately 1.9 million  
cars off the road annually

**5.9**

**million trees planted**

to date across all  
operations – one of the final  
reclamation steps to support a  
healthy ecosystem

**9,200+**

**hectares reclaimed**

in conventional and  
thermal operations since 2016,  
equivalent to ~11,300 Canadian  
football fields

**1,065**

**wells abandoned**

in conventional operations in 2020, taking  
inactive sites out of service in a safe and  
environmentally sound manner

**854**

**reclamation certificates**

received in 2020 for 2,065 hectares  
reclaimed, the most of any operator  
in Western Canada



Planting trees in Bonnyville

*"To develop people to work together to create value for the Company's shareholders by doing it right with fun and integrity."*  
To keep up to date with what's happening at Canadian Natural and our involvement in your community, follow us on:

